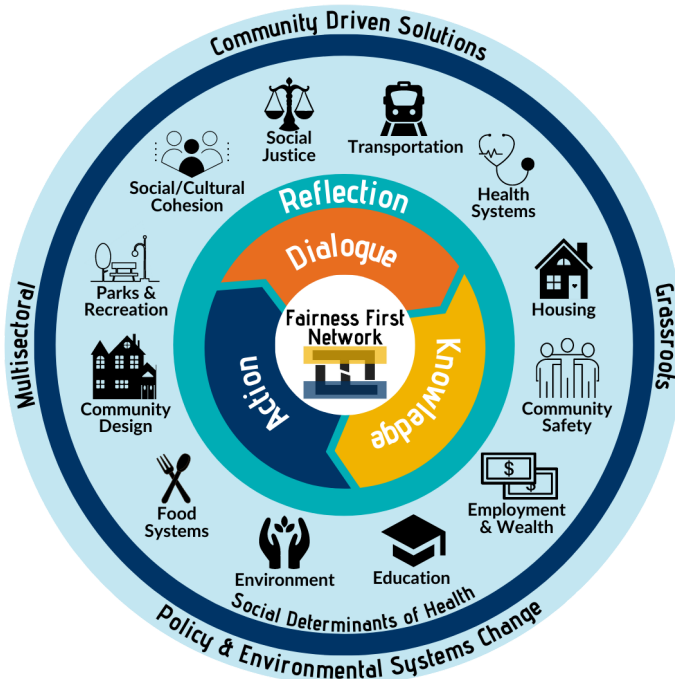


Southwest Health Equity Research Collaborative's's (SHERC) Stories of Community Engaged Video Series Discussion and Reflection Guide

Purpose: This guide is designed to help viewers of the video series reflect on and discuss strategies for getting started and being successful in community-engaged research efforts.

Audience: Community members, researchers and students who are involved in or interested in any of the sectors identified in Figure 1, the SHERC Community Engagement Framework.



Overview of Videos: The video series captures the voices of four successful health equity community-engaged research projects. Each project team was asked to discuss five topics related to community-engaged research.

1. Meeting & connecting
2. Learning about your partner
3. Negotiating expectations, roles, & responsibilities
4. Navigating through challenges & successes
5. Reflections & important lessons learned

Videos can be found here:

<https://nau.edu/sherc/cec-video-series/>

Discussion Guide: The discussion questions below address each of the five topics discussed in the video series by the community-based researcher and the academic-based partners. Watch all five of the topics for at least one of the research projects and then reflect and discuss the project using the questions below.

1. Meeting & connecting

- What questions did the community partner have prior to entering into a research collaboration?
- Prior to agreeing to a collaboration, what questions might a potential community-based partner ask of a potential academic-based partner? What questions might a potential academic-based partner ask of a potential community based partner?
- How can trust be addressed in a community-academic research project?
- What are some strategies that community and university-based partners might use to develop a strong foundation for an effective working relationship?

2. Learning about your partner

- What are some strategies to ensure that the collaboration is respectful of the culture and institutional structure of both the community and university-based partners?
- What are ways that both the community and university-based partners can facilitate building an open relationship able to address potential miscommunications?
- What factors increase trust between community and academic-based partners?
- What factors can influence the success of getting the community and academic-based partners to come together to work on this project?

3. Negotiating expectations, roles, & responsibilities

- What barriers could occur in negotiating the expectations and roles of the partners?
- What is the importance of re-assessing the roles of the partners involved? How might community and academic partners go about re-assessing those roles?
- How can understanding and distinguishing expertise within the team help assess expectations, roles, and responsibilities?
- Partnerships can sometimes fall into natural roles and responsibilities, What types of communication can ensure a collaborative and equitable partnership?
- Why is it important to foster capacity building and understand the strengths and capacities of the partners?

4. Navigating through challenges & successes

- In what ways can navigating challenges empower the collaboration and each partner?
- What are creative ways to overcome challenges and share successes?
- Academic and community partners often work in different settings and have differing ways of doing things. How can partners develop a collaborative framework and timeline that accommodate the unique styles of working?
- How can partnerships foster co-learning and create a shared end goal to apply and disseminate results?
- What are some strategies to navigate challenges such as data sharing in a way that supports the project, supports the end goal, and protects the privacy of the participants?
- Effective collaboration between all partners? stakeholders is needed to avoid or overcome challenges. What role, if any, do researchers play in establishing an open dialogue between the community and Institutional Review Board (IRB)?

5. Reflections & important lessons learned

- What are some strategies to ensure the partnership between community and academic based partners was equitable?
- What are some ways to improve infrastructure to support community-academic partnerships?
- How can community and academic partners collaborate in the planning, data collection, interpretation and dissemination phases of a research project?
- How can academic and community based partners continue to support each other after the community-engaged project is over or no longer being funded to express a commitment to sustainability?