

Bachelor of Health Sciences

Respiratory Care

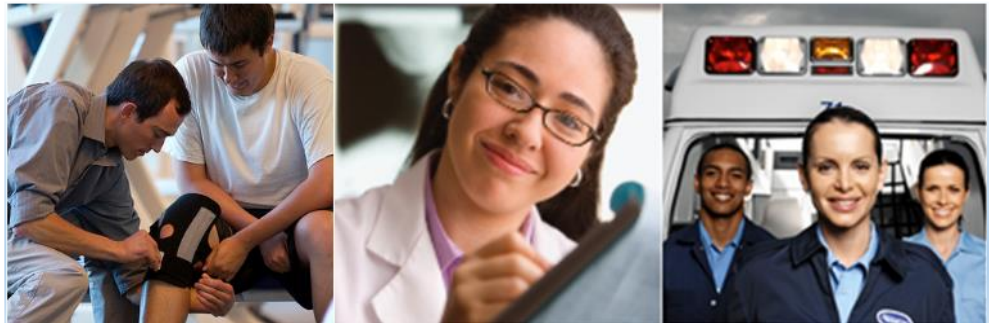
Learn more about the Allied Health Program offered at NAU!

Allied Health clinical concepts and training are attained at the associate degree level and general health concepts are taught online through NAU to enhance allied health academic preparation at the bachelor degree level. NAU offers seven emphasis areas from which to choose:

- Allied Health
- Diagnostic Medical Imaging and Therapy
- Medical Assisting
- Paramedic Care
- Physical Therapist Assisting
- **Respiratory Care**
- Surgical Technology



NAU.EDU/extended
EC.Admissions@nau.edu
800-628-0040



The Allied Health program provides a convenient, flexible way for students and working professionals to complete their bachelor's degree. If you're an allied health professional seeking career advancement opportunities or looking to complete a bachelor's at your own pace, the Allied Health program features:

- flexible online course delivery
- the option of starting before, during, or after completing your associate's degree
- transferability of up to 90 lower-division credits from a regionally accredited institution
- advising available in person, by phone, or online

Admission Requirements

- Students must have, be currently pursuing, or be on the waitlist for an associate's degree program in an allied health discipline through a regionally accredited college.
- Students must secure certification and/or licensure upon completion of their associate's degree and must hold it current during the NAU capstone course.
- Students must have a GPA of 2.5 or higher.

"NAU's Distance Learning bachelor's degree is in high demand among health care professionals. Allied health professionals now have the opportunity to advance their careers and strengthen their backgrounds in health promotion and disease prevention by earning their Bachelor's Degree." –Fran Roberts, R.N., Ph.D. and Vice-President of Arizona Hospital and Healthcare Association.

Program Overview

The Department of Health Sciences at Northern Arizona University offers an online bachelor degree completion program in Respiratory Care. The B.S. Health Sciences program was developed to provide a convenient and flexible way for students and working professionals to complete their bachelor degree.

This degree is appropriate for qualified students and professionals who:

- wish to earn their Bachelor's degree while continuing to work
- are interested in learning more about health promotion/disease prevention
- would like to qualify for career advancement opportunities

Bachelor Degree Requirements

The Bachelor of Science in Health Sciences: Respiratory Care requires a total of 120 credits of NAU* and transfer coursework to include:

- Liberal Studies (minimum of 35 units)
- Health Science Core (30 units)
- Associate degree's discipline-specific courses (up to 90 units)
- Electives (if needed to reach an overall total of 120 units)

*Please note that you must complete a minimum of 30 credits at NAU.

Getting Started

To get started, please read through this packet and then contact one of these locations for further assistance:

NAU GateWay Community College

(602) 286-8194

EC.Admissions@nau.edu

NAU Extended Campuses

(800) 628-0040

EC.Admissions@nau.edu

Frequently Asked Questions

Is earning the Associate's degree required?

Yes. The B.S. Health Sciences degree completion program requires students to transfer in a qualifying regionally accredited associate degree. NAU does not offer the clinical or discipline specific coursework that transfers in from the associate program. Qualified students may begin taking NAU coursework prior to finishing their associate but must complete it and obtain their certification/licensure prior to starting their final course, HS 460C.

Do I have to earn the AGEC (Arizona General Education Certificate)?

No. Students may take NAU online courses to meet specific liberal studies course requirements. Students who do transfer in the AGEC automatically fulfill NAU's liberal studies and diversity requirements. Health Sciences advisors assist students individually to determine their best course of action to complete the program.

When should I apply to NAU?

Applications are accepted year round. See page 7 for application instructions. This program requires two separate applications, one to the university and one to the department. Due to specific prequalification requirements, students should consult with an NAU Student Services Coordinator prior to applying for admission to this program. Qualified students may apply and start taking coursework any semester.

How much does it cost to attend NAU?

The total cost includes tuition, fees, course textbook(s) and materials, residency status of student (Arizona vs. out of state), and the number of courses needed to complete the degree. NAU has one of the lowest tuition rates of any college in Arizona. For detailed, current information on tuition and fees, refer to NAU's website at nau.edu/bursar and click on "Tuition and Fees."

Is financial aid available?

Yes. Students who wish to use financial aid to cover their education expenses need to apply for it two to three months prior to their desired start term. Students may contact a financial advisor at (602) 728-9506 or 1 (800) 426-8315, ext. 4951. NAU scholarships are also available. Refer to NAU's financial aid website at nau.edu/finaid for more information.

Where and how are NAU courses held?

All NAU coursework for this program is delivered online. No travel to the main NAU campus in Flagstaff is required. Refer to the final page of this packet for more information about taking online classes through NAU.

Can I transfer to NAU-Flagstaff to complete this degree?

Yes. Students may transfer to the NAU Flagstaff campus to complete the program if they wish. The online format allows students who cannot attend college in a traditional setting to complete this program no matter where they live.

Bachelor's Degree Curriculum

Associate's Degree Discipline-Specific Coursework (up to 90 units)

Students may transfer up to 90 credits from their completed Associate's degree. Please note that to graduate from NAU, an additional 30 credits minimum must be completed at NAU.

Liberal Studies (minimum of 35 units)

Students must complete 35 units of NAU liberal studies, as well as meet NAU's US Ethnic and Global Diversity requirements. Arizona students who have completed the AGEC (Arizona General Education Curriculum) meet all of the NAU Liberal Studies requirements.

Health Sciences Core (24 units)

- HS 200—Healthy Lifestyles
- HS 300—Human Diseases
- HS 320—Mind-Body Health
- FW 321—Stress Management
- HS 390W—Current Health Issues (Junior Level Writing Requirement)
- HS 404—Principles of Epidemiology
- HS 410—Organization and Administration of Health Services
- *HS 460C—Leadership and Interprofessional Team Work for Health Professionals (Capstone Requirement)

*Before enrolling in HS 460C, students must: complete an Associate's degree in Respiratory Care at a regionally accredited community college; obtain/maintain a current certification/license in Respiratory Care; complete all 200-level and 300-level HS courses; and have a GPA of 2.5 or higher.

Program Approved Electives (6 units)

The Program Approved Upper Division Electives (300-400 level) are an integral part of the Allied Health Curriculum. These are not open or general electives. Due to the special nature of the Allied Health upside-down 2+2 program, HS electives for the Allied Health program must come from an approved list and within the Health Sciences department.

Please see an AH advisor for the pre-approved list, or review an updated list here:

<https://nau.edu/chhs/health-sciences/allied-health-approved-electives/>



CURRICULUM CHECK SHEET

NAME	ID NUMBER	EVALUATOR	DATE

Licensure Verified: Yes Expires:
 2.5 GPA Verified: Yes No

Currently Eligible for Program: Yes No
 Awaiting Documentation: Yes No
 Currently Admitted to Program: Yes No

I. LIBERAL STUDIES (35 Hours)			
COURSE PREFIX & NUMBER	HRS	SEM & YR	INST/ GRADE
Foundations (7 hours minimum) (FNRQ)			
MAT 114/STA 270	3		NAU/CC
Choose 1 of the following:			
ENG 105	4		NAU
or, ENG 101 and	3		CC
ENG 102	3		CC
Distribution Requirements (25 hours)			
Science (7 hours) (at least one must be a LAB course)			
	4		
	3		
Aesthetic & Humanistic Inquiry (6 hours) (AHI)			
	3		
	3		
Cultural Understanding (6 hours) (CU)			
	3		
	3		
Social and Political Worlds (6 hours) (SPW)			
PSY 101 (prereq)	3		
	3		
Liberal Studies Elective (3 hours)			
	3		
TOTAL HOURS		(35 hours minimum)	

II. DIVERSITY COURSE REQUIREMENTS	
GLOBAL Diversity course:	
US ETHNIC Diversity course:	

OTHER GRADUATION REQUIREMENTS	
Total Community College Hours (90 max)	90
Total NAU Hours (30 hours/18 upper division)	
Total University Hours (30 hour minimum)	
Total Upper Division (UD) Hours (30 hour minimum)	
Total Hours (120 hour minimum)	
NAU Cumulative GPA (2.5 minimum)	
All HS major coursework a "C" or higher	

III. HEALTH SCIENCES CURRICULUM			
COURSE PREFIX & NUMBER	HRS	SEM & YR	INST/ GRADE
Health Sciences Core (30 hours)			
HS 200	3		NAU
HS 300	3		NAU
HS 320	3		NAU
FW 321	3		NAU
HS 390W	3		NAU
HS 404	3		NAU
HS 410	3		NAU
UD HS/FW elective	3	300-400 level	NAU
UD HS/FW elective	3	300-400 level	NAU
HS 460C	3		NAU
ASSOCIATE DEGREE: CURRICULUM EMPHASIS IN ALLIED HEALTH (up to 58 Hours) (C or better required in all courses)			
(Degree Title)			
Institution:		Hours Used:	
Graduation Date:		Waitlist Status:	

IV. ADDITIONAL ELECTIVES (If Needed to Reach Graduation Requirements)			
UD General Elective	3	300-400 level	NAU

TRANSFER SUMMARY		
INSTITUTION	ABBREVIATION	HOURS
TOTAL TRANSFER HOURS		

NAU Course Descriptions

Required Courses:

HS 200—Healthy Lifestyles

Physical, mental, and social health as it relates to the individual.

HS 300—Human Diseases

Overview of acute and chronic diseases, how these diseases affect the human body, and actions one might take to reduce the risk.

HS 320—Mind-Body Health

This course will introduce students to the basic principles, current understandings, and new research regarding the mind-body-spirit interaction and its effects on health. Application of these concepts will be an integral part of the course.

FW 321—Stress Management

Examination of the stress response and the relationship of stress management to health. Analysis and application of stress management strategies using a holistic paradigm.

HS 390W—Current Health Issues

In-depth study of selected contemporary health problems; examines contributing social, psychological, physical, legal, and cultural factors.

HS 404—Principles of Epidemiology

Concepts and methods for analyzing the spread and control of disease: trends in solving community health problems.

HS 410—Organization and Administration of Health Services

Studies the organization and administration of health services; roles of international, federal, state, and local health organizations; barriers to health services delivery.

HS 460C—Leadership and Interprofessional Team Work for Health Professionals

Leadership and interprofessional teamwork concepts and applications for health professionals.

Some Elective Options:

HS 313—Environmental Health

Studies environmental health issues and interventions to modify the environment to improve human health.

HS 471—Racial/Ethnic Health Disparities

Provides an overview of the racial and ethnic barriers to health equity and the specific disparities among these groups in the United States. Specific programs to address these issues will be explored and discussed.

Steps for Admission and Registration

1. Get connected with an advisor by emailing or calling:

1 (800) 628-0040 or **EC.Admissions@nau.edu**

- Call a NAU Student Services Coordinator prior to applying to determine if you qualify for this program and to help get you started.
- The advisor will ask you to forward unofficial transcripts (or copies) of your college work so far *prior to your official phone or online advising session*. This gives the advisor time to prepare your degree evaluation. The evaluation will show how your transfer credit will apply and the courses you will need to take to complete the B.S. Health Sciences degree.

2. Complete the NAU application

- Go to <http://nau.edu/admissions/how-to-apply/> scroll down to Transfer and click on the arrow, then click on **Apply Now: Online & Community Campuses**
- Contact your prior colleges and have them submit sealed, official transcripts to:

NAU Undergraduate Admissions

PO Box 4084

Flagstaff, AZ 86011-4084

If you are 24 years old or younger and have not completed a regionally accredited associate's degree, you must send an official high school transcript as well.

3. Complete the Health Sciences Program Application

- Go to <http://www2.nau.edu/~hsdl-p/application.php> use program menu to select Bachelor of Science in Respiratory Care

4. If desired, apply for financial aid

- Go to nau.edu/finaid to get started
- Call (602) 728 – 9506 or 1 (800) 426-8315 if you have questions

5. Upon notification of admission, contact your NAU advisor for assistance choosing and enrolling in classes.

Steps to a Successful Online Experience

1. You need access to the Internet. NAU students who do not have access to a computer may use any NAU Extended Campus computer lab. See NAU locations at extended.nau.edu/ and call the campus for computer lab hours.
2. To access Bb Learn (NAU's web course platform), go to bblearn.nau.edu, click on "Log in to Bblearn" and enter your NAU User ID and password (which you set up once you are admitted), then click on your class. If you have questions or experience problems logging in, please call the Academic Computing Help Desk at (888) 520-7215 or email StudentComputing@nau.edu.
3. Check your e-mail messages from your instructor frequently. Online instructors contact their students through their Bb Learn class e-mail accounts. They provide pertinent information about your course. To access your Bb Learn e-mail, log into your class, then choose "Mail" in the left side menu.
4. Students may purchase texts for their NAU online courses through the NAU Bookstore at nau.edu/bookstore.
5. Students who wish to familiarize themselves with the format of an online course or practice online skills can take the TIPS course (Technology Information and Proficiency Skills) that is accessible to all admitted NAU students by logging into bblearn.nau.edu.
6. Many online courses use the NAU Cline Library as an important resource for class projects and assignments. Your online instructor may provide a link. If not, you can access the library at nau.edu/library or call them toll free at (800) 247-3380.
7. Additional resources to assist online students are located on the Academic Computing Help Desk web site at nau.edu/its or at (888) 520-7215. NAU Extended Campuses wants you to be a successful web student and have a positive experience. If you have questions about your online courses, please feel free to contact the NAU Extended Campuses office at (800) 426-8315.