



SHOW, Crossroads & Interprofessional/Integrated Care

- Liz Harrell DNP, PMHNP-BC

Edson College of Nursing and Health Innovation Clinical Assistant
Faculty- Honors Faculty

Program Director for the Student Health Outreach for Wellness
(SHOW) Community Initiative

Refugee Education and Clinical Team (REACT) Faculty Lead

Crossroads Chief Medical Officer of Integrated Care Services

LizHarrell@ASU.EDU

www.SHOWAZ.ORG



- Arizona's first tri-university (ASU, NAU, UA) collaborative project
- Operating since 2013
- Run by students and guided by faculty
- Diverse backgrounds: traditional health care disciplines, business, journalism, law, global health, and computer science
- Unites students, faculty, community providers, community & government organizations, and underserved populations
- Mission: To provide holistic, client-centered health care services
- Interprofessional team-based care model





Accelerating Interprofessional Community-Based Education and Practice

Accelerating the development of interprofessional initiatives in community-based clinical settings



Call to Action: Healthcare education and healthcare delivery must be simultaneously designed to be better integrated and more interprofessional while demonstrating outcomes.

The National Center calls this the “**Nexus**”.
National Center for Interprofessional Practice and Education- Accelerating Grant

Four private foundations:

- The John A. Hartford Foundation
- Robert Wood Johnson Foundation
- Josiah Macy Jr. Foundation
- Gordon and Betty Moore Foundation

2010 Future of Nursing report

16 Nursing Schools – Advanced Nurse Practice Leaders of Teams

“True” Community Settings

Two-year cohort – 2016-2018

\$50K plus significant technical assistance – 2 years

Sites needed to match \$50K

Institute, tools, site visit, affinity group calls

External evaluator – Harder + Company

Visit:

<https://nexusipe.org/advancing/accelerating>

Webinar: [Expanding a Successful Interprofessional Approach with a Strong Community Partner: Arizona’s Nexus Team](#) (webinar)

National Center Accelerating Interprofessional Community-based Education and Practice Initiative. March 3, 3 p.m. ET.



Operating since 1960

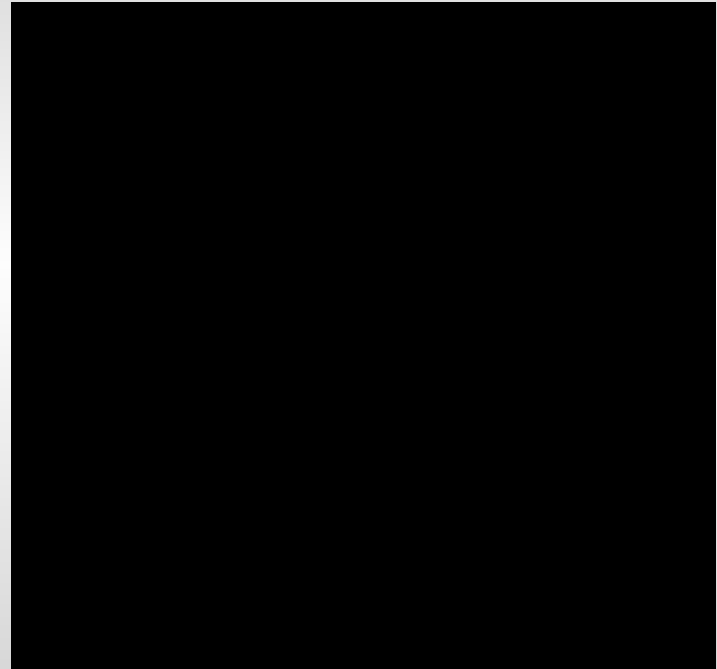
Community based service

Transitional Living- with treatment
component- VA and Federal diversion

Residential & Outpatient Treatment center

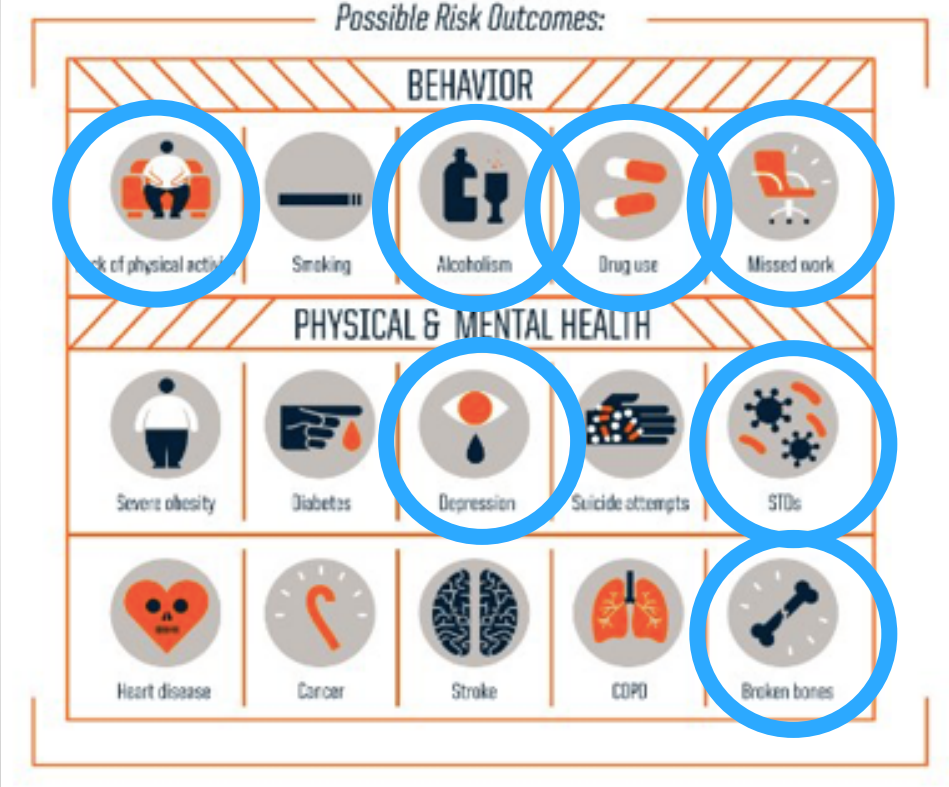
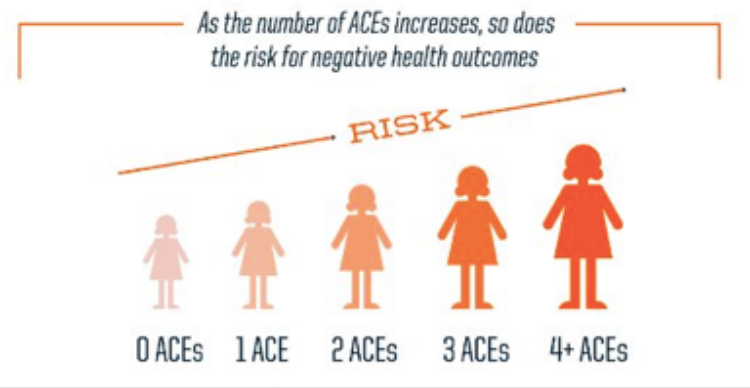
- Mission: “To provide high quality, affordable, comprehensive substance use treatment programs and services recovery, personal growth, accountability, self-sufficiency, and healing”.

Moto: “ Changing lives. One person at a time.”



Adverse childhood experiences

When unaddressed...



Trauma Informed-Integrated, Interprofessional Practice



The *National Center ACE-15* November 2016 assessment shows the greatest strength in areas of the team culture of continuous learning, appreciating each other's values and diversity, roles and expertise, autonomy, and ability to bring up concerns. It is evident the team is good at challenging the process and the status quo.



Questions? More Information?

- Visit: <https://nexusipe.org/advancing/accelerating>
- Webinar: [Expanding a Successful Interprofessional Approach with a Strong Community Partner: Arizona's Nexus Team](#) (webinar)
National Center Accelerating Interprofessional Community-based Education and Practice Initiative. March 3, 3 p.m. ET.