



**REGIONAL CENTER FOR
BORDER HEALTH, INC.
SAN LUIS WALK-IN CLINIC, INC.**

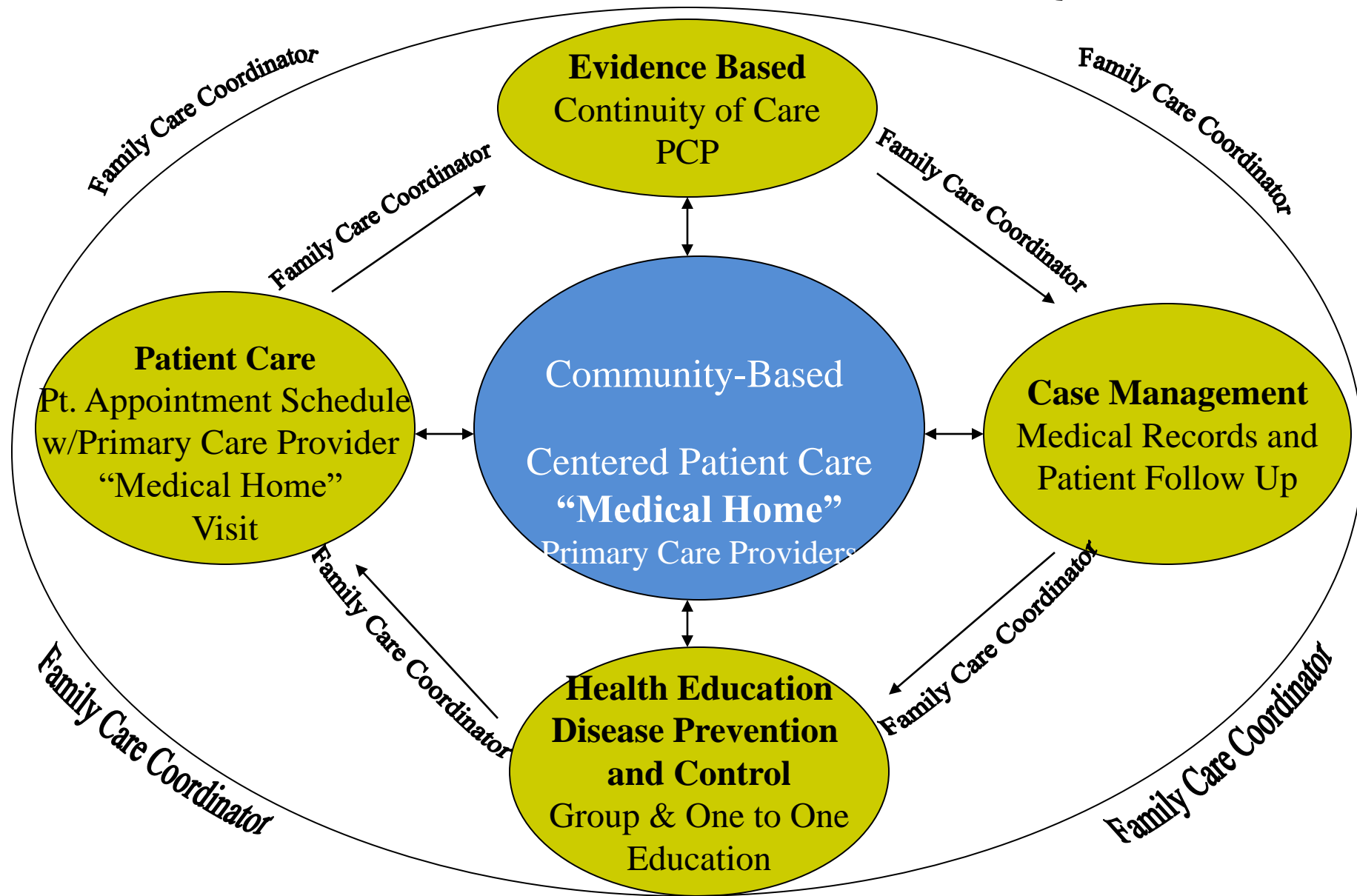
“PROMOTORA DE SALUD” (CHOW) MODEL

*EFFECTIVE COMMUNITY OUTREACH STRATEGIES FOR
INCREASING ACCESS TO HEALTHCARE AND ADDRESSING
SOCIAL DETERMINANTS OF HEALTH & HEALTH EQUITY*

5TH ANNUAL ABRC YUMA FORUM, MAY 25TH, 2023

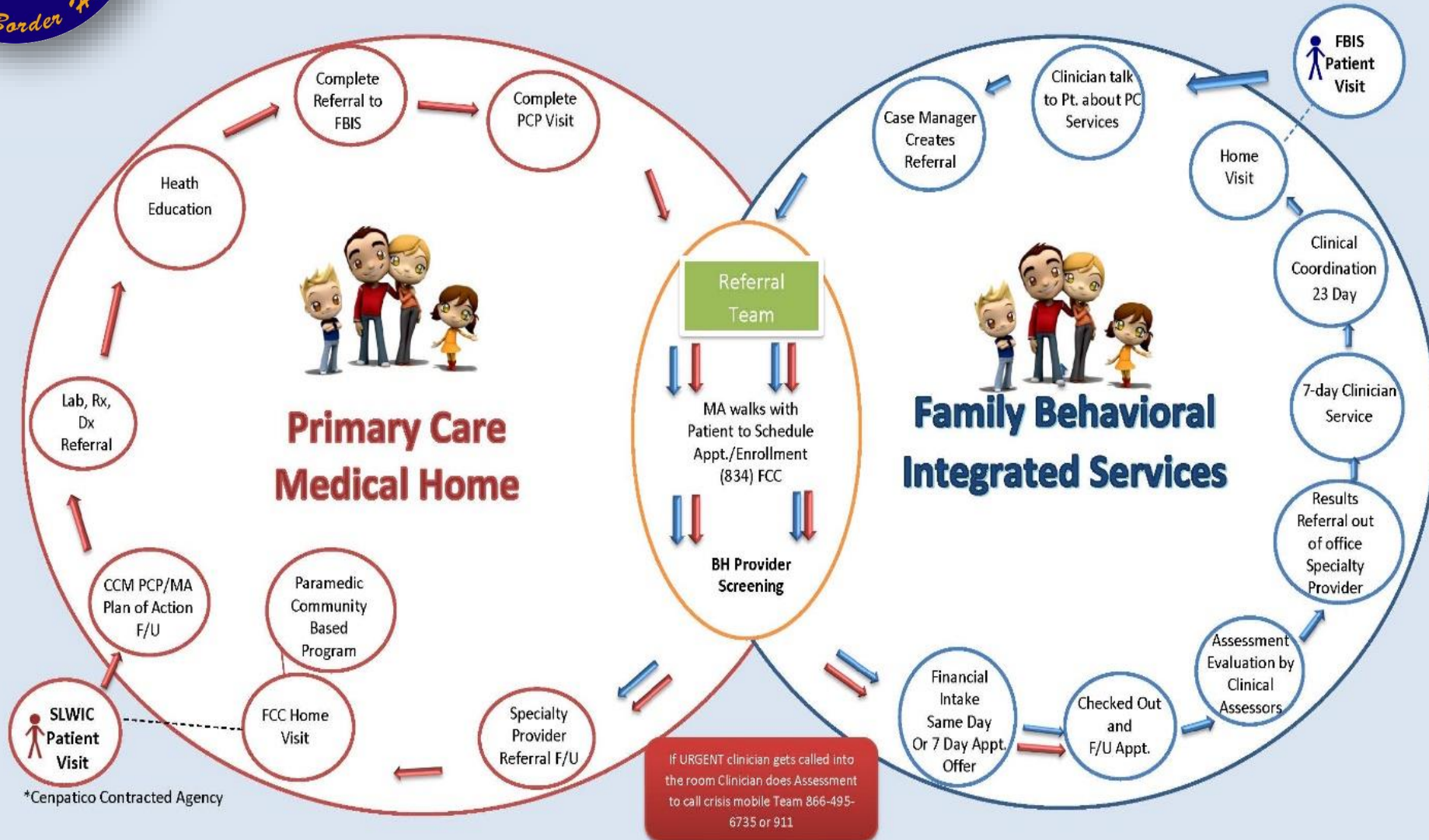
YUMA, ARIZONA

*COMMUNITY-BASED
INTEGRATED CENTERED PATIENT CARE
ADDRESSING SDOH & HEALTH EQUITY*





RCBH SLWIC PCMH - Family Behavioral Integrated Services Intake Coordination of Care *



REGIONAL CENTER FOR BORDER HEALTH, INC. AND SAN LUIS WALK IN CLINIC, INC. (RHC)

The map shows three service areas in Arizona: Mohave, La Paz, and Yuma. Arrows point from these areas to a grid of 18 photographs of various medical facilities. The facilities are arranged in two columns. The left column contains 10 photos, and the right column contains 8 photos. The photos are labeled with their respective locations: Kingman, Arizona; Lake Havasu, Arizona; Parker, Arizona; San Luis Arizona; Yuma, Arizona; Somerton, Arizona; and San Luis Arizona.

| Location | Facility Name |
|----------------------|---------------------------|
| Kingman, Arizona | Kingman Medical Plaza |
| Lake Havasu, Arizona | Lake Havasu Medical Plaza |
| Parker, Arizona | Parker Medical Plaza |
| San Luis Arizona | San Luis Medical Plaza |
| Yuma, Arizona | Yuma Medical Plaza |
| Somerton, Arizona | Somerton Medical Plaza |
| San Luis Arizona | San Luis Medical Plaza |





*REACHING RURAL DISTRESSED COMMUNITIES TO INCREASING
ACCESS TO AFFORDABLE HEALTHCARE AND PROMOTING
VACCINE CONFIDENCE*

RCBH/SLWIC MEDICAL HOME FOR PATIENT CARE

- What is a Patient-Centered Medical Home?
 - A medical home is defined as primary care that is accessible, continuous, comprehensive, family centered, coordinated, compassionate, and culturally effective.
- Convenient Access
- Efficient Care
- Quality Care
- Cost Effective Care



MEDICAL HOME BENEFIT ALL

San Luis

- Enhanced quality of care & customer service
- Improved effectiveness & efficiency of care
- Member Loyalty & Growth
- Improved Provider satisfaction

Patients

- Optimal health and quality of care
- Better access to care & convenience
- Enhanced satisfaction

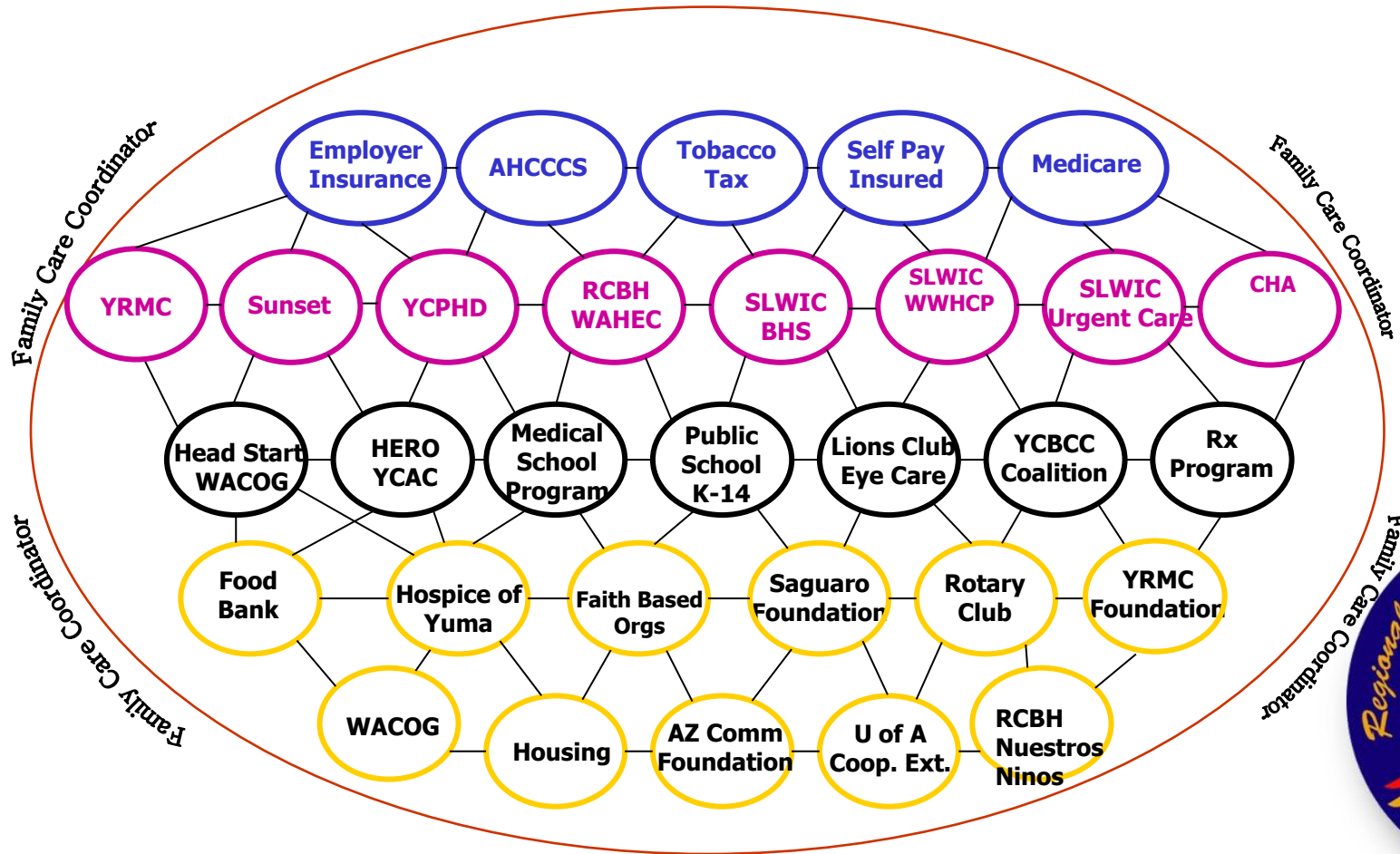


WHAT IS A PROMOTORA/CHOW?

A Promotora de Salud is the link between primary care/medical home, individual/family and community to improve access to a well defined continuum of culturally competent and linguistically appropriate care from prevention to primary care.



Yuma County Safety Network



HEALTH EDUCATION DISEASE PREVENTION



- Diabetes (National Certification)
- Your Heart, Your Life (NHLBI, National Certification)
- Epilepsy
- Hypertension
- Oral Health
- Breast and Cervical Cancer
- Domestic Violence
- Pesticides
- Household Chemicals
- TB
- Environmental/Recycling (3Rs)
- STDs
- Asthma



COMMUNITY OUTREACH

“MEDICAL HOME”

- Perform care coordination of High Risk Target Groups
 - EPSDT
 - Women’s Health
 - Heart Disease Prevention (Hypertension/Cholesterol)
 - Diabetes
 - Asthma (asthma camp)
 - COPD patient care
 - Youth Mental First Aid



COMMUNITY OUTREACH EFFORTS

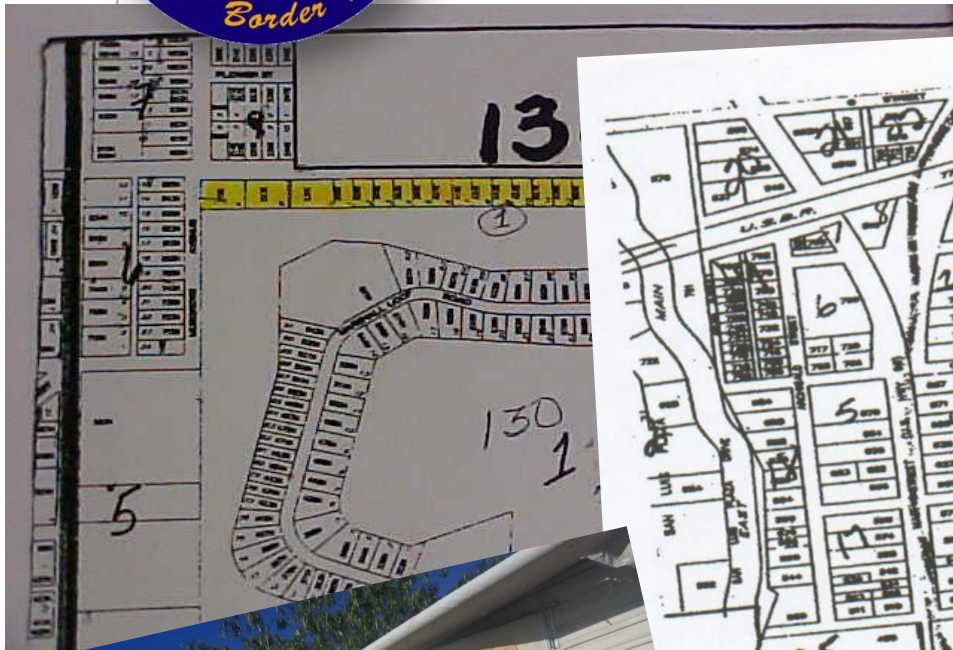
- **“Our Children/Nuestros Ninos” Community Health Census and Outreach Campaign**
 - Identify families in need of social health services, provide referrals and assist the families in accessing those services in the South Yuma County, Arizona Border area.
 - Inform families about the various resources that are available through our agency as well as in the community.
 - Identify children under the age of five with incomplete immunization schedules
 - Identify pregnant women without prenatal care and assist with information as well as providing referrals in order for them to receive the care they need.





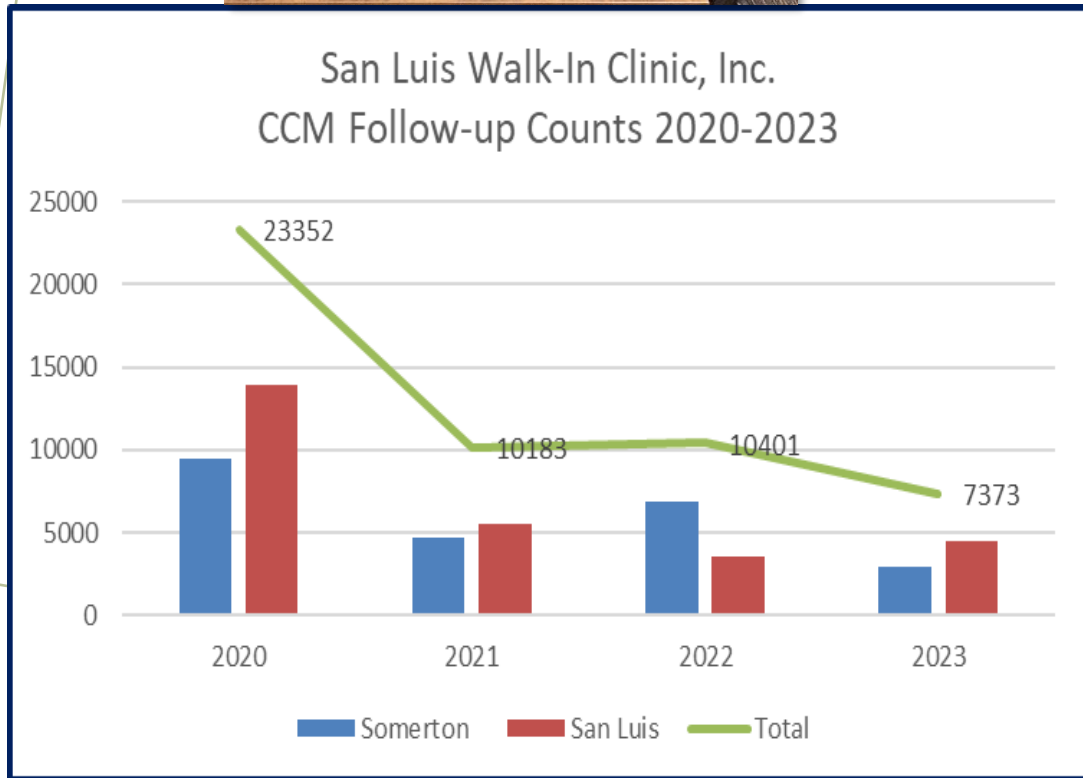
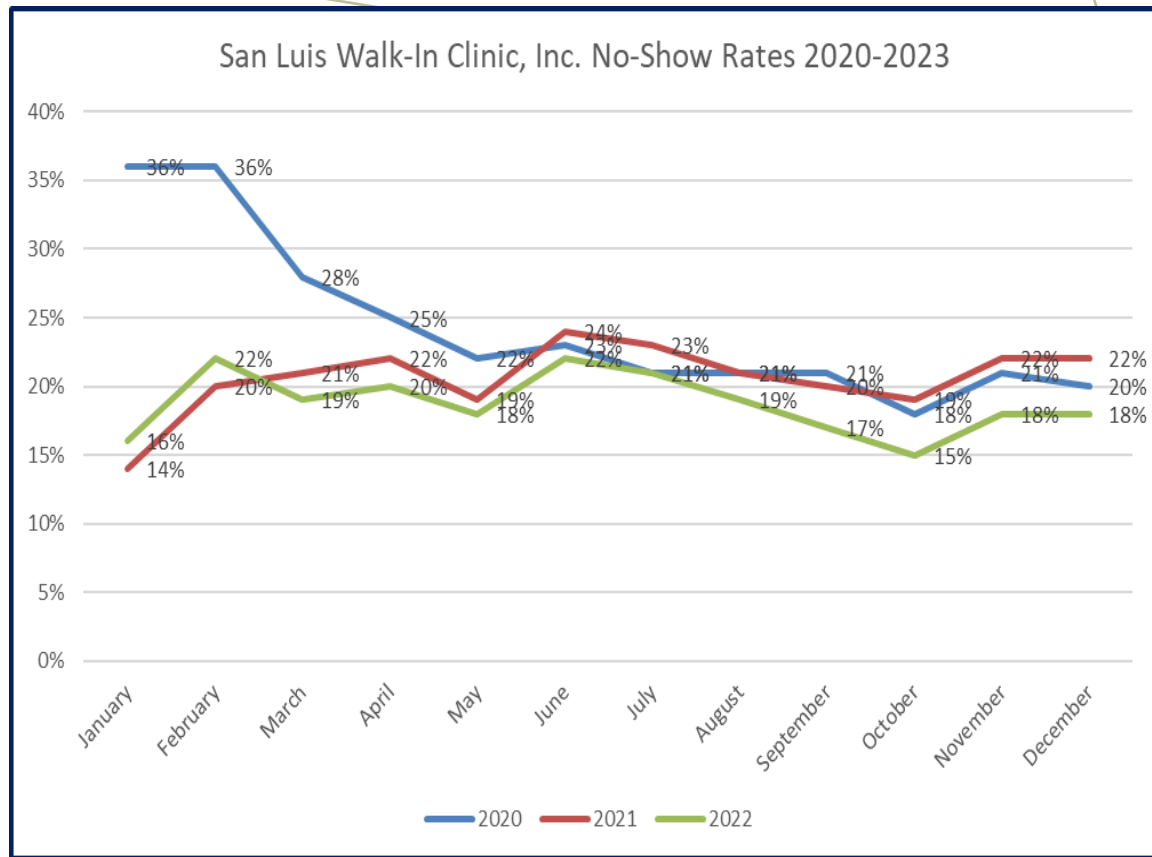
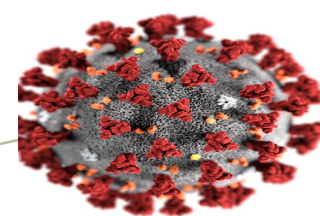
Somerton, AZ (1998)

Geo Statistic Basic Area "AGEB"





AN INTER-PROFESSIONAL APPROACH TO
COMMUNITY BASED PARAMEDIC PROJECT
ADDRESSING SOCIAL DETERMINANTS

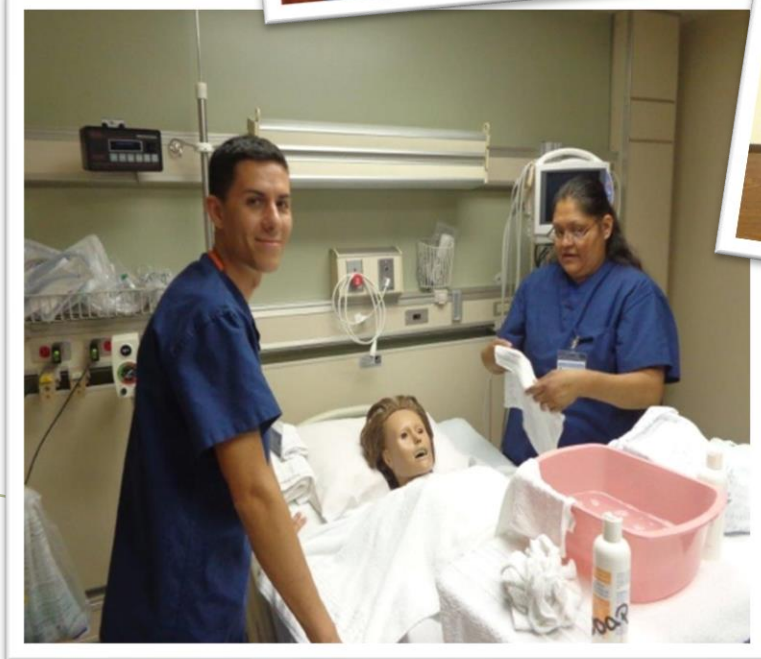
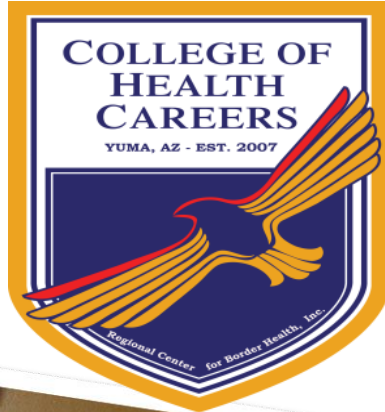


Farmer's Market On Wheels



College of Health Careers Somerton, AZ





- Medical Office Specialist
- Medical Coder & Biller
- Phlebotomy Technician
- Certified Nursing Assistant
 - Caregiver
 - Direct Care Worker
- Nutrition & Food Services Management
 - ServSafe (National Certification)
 - CPR and First Aid

"Growing Our Own"



College of Health Careers

GED (ENGLISH/SPANISH)

- 6 WEEK COURSE
- EVENING CLASSES, 3 DAYS A WEEK
- SPANISH AND ENGLISH
- COST \$ 540.00
- SPONSORS: SNAP-CAN 50%, PPEP 100%
COVERAGE



BASIC COMPUTER SKILLS

- 2 WEEKS COURSE
- EVENING CLASS, 4 DAYS A WEEK
- COST \$164.00
- SPONSOR: SNAP-CAN 50%



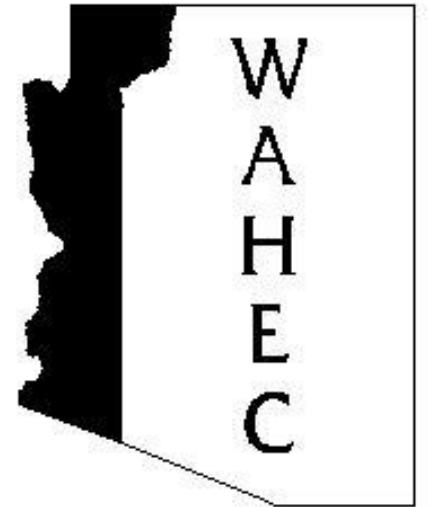
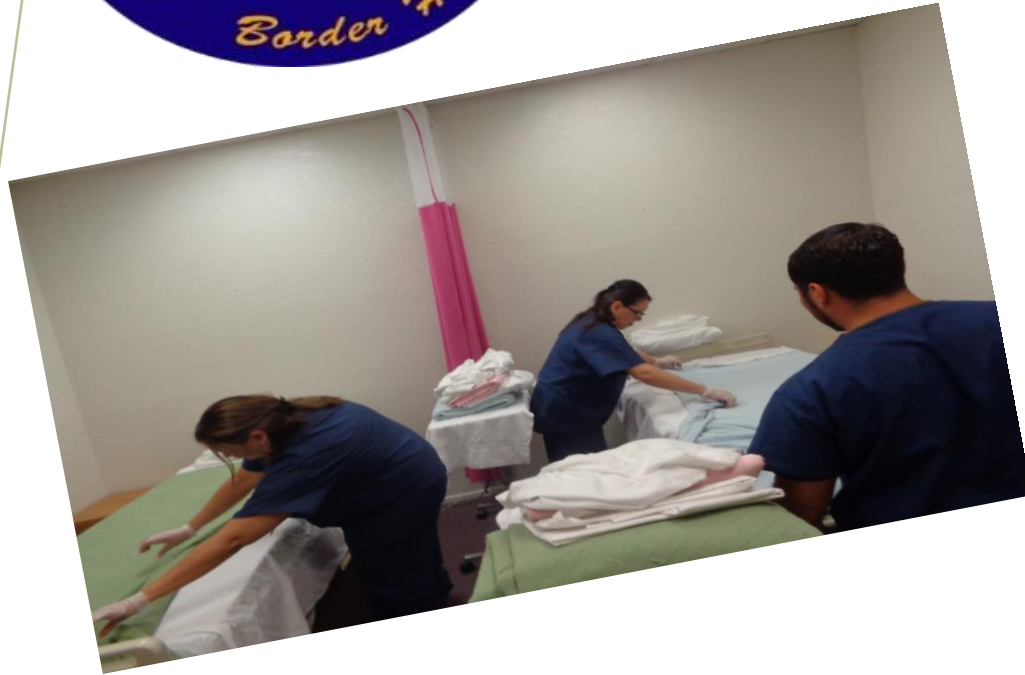
CUSTOMER SERVICE TRAINING

- 2 WEEKS CORSE
- EVENING CLASS, 4 DAYS A WEEK
- COST: \$164.00
- SPONSOR: SNAP-CAN 50%





Direct Care Worker Certification for Promotores de Salud/CHOWs





A TOTAL 35 PROMOTORES DE SALUD AT RCBH HAVE APPLIED FOR ADHS CHW LICENSED



ARIZONA DEPARTMENT OF HEALTH SERVICES

PROPERTY OF THE
ARIZONA DEPARTMENT OF HEALTH SERVICES

Gloria Hernandez
Is granted this license as a
COMMUNITY HEALTH WORKER

License Number: CHW0000000070

Effective Date: March 10, 2023

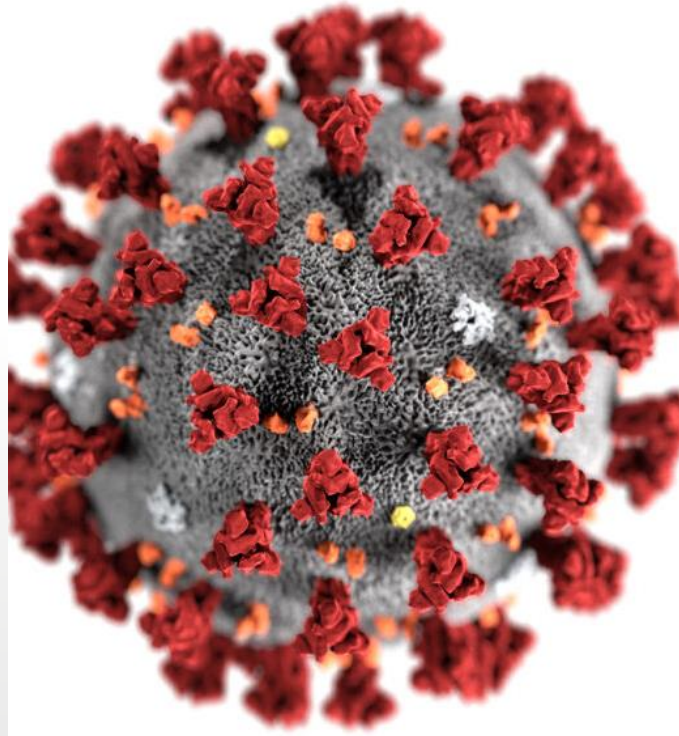
Expires: March 9, 2025

Recommended By: Megan Whitby
Megan Whitby, Bureau Chief

Issued By: Tom Salow
Tom Salow, Assistant Director

HEALTH AND WELLNESS FOR ALL ARIZONANS

PURSUANT TO A.R.S. §41-1092.11(A), UPON SUBMITAL OF A TIMELY AND SUFFICIENT APPLICATION
THIS LICENSE WILL REMAIN UNTIL REISSUED OR REVOKED
TO BE FRAMED AND DISPLAYED IN A CONSPICUOUS PLACE



SCHOOL-BASED INTEGRATED CARE

PARENT TRAINING

YOU WILL LEARN ABOUT:

- DIAGNOSIS PROCESS
- AUTISM SPECTRUM DISORDER
- ATTENTION-DEFICIT/HYPERACTIVITY DISORDER
- MANAGING BEHAVIOR ISSUES
- TEACHING NEW SKILLS

LOCATION:

- 214 W. Main Street, Somerton, AZ 85350

DATE & TIME:

- November 6th, 2020 — February 26th, 2021
- 3:00PM—5:00PM

PRESENTED BY:

- Zeenat Wakefield, MED, ABA
- Gabriela Enriquez, BHT

Contact:

- (928) 627-1120

RCBH/SLWIC is an equal opportunity employer and provider
Snacks and refreshments will be provided



KINGMAN UNIFIED
SCHOOL DISTRICT #20



RCBH/SWIC SCHOOL-BASED INTEGRATED CARE

YUMA COUNTY

Yuma Elementary School District One

- Gila Vista Jr. High School
- O.C. Johnson Elementary School
- WACOG Headstart

Gadsden School District

- Arizona Desert Elementary School
- Cesar Chavez Elementary School
- Desert View Elementary School
- Ed Pastor Elementary School
- Gadsden Elementary School
- Rio Colorado Elementary School
- San Luis Elementary School
- Southwest Junior High School
- WACOG Headstart

Somerton School District

- Somerton Middle School
- Encanto Learning Center
- Orange Grove Elementary
- Desert Sonora Elementary
- Bravie T. Soto Elementary
- Sun Valley Elementary School

LA PAZ COUNTY

- WACOG Headstart

MOHAVE COUNTY

Kingman Unified School District

- Kingman High School
- Lee Williams High School
- Kingman Middle School
- White Cliffs Middle School
- Desert Willow Elementary
- Cerbat Elementary School
- Hualapai Elementary School

Manzanita Elementary School





MOHAVE COUNTY COLLABORATING AGENCIES

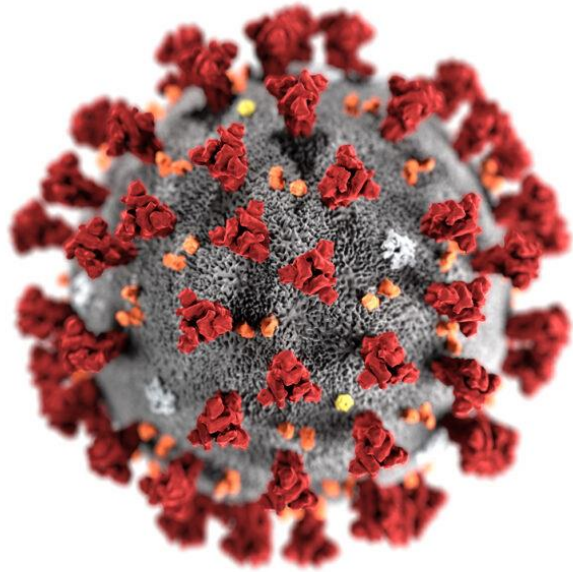


- Lake Havasu Health Foundation
- Kingman Unified School District
- WACOG Mohave County
- Western Arizona Senior Living
- Mohave County Department of Public Health
 - Lake Havasu City
 - Kingman



SAN LUIS AZ. GADSDEN SCHOOL DISTRICT MIGRANT PROGRAM





***COVID-19 PANDEMIC
RCBH/SAN LUIS WALK IN CLINIC, INC. (RHC)***

YEAR TO DATE TESTING (398,984)

- **Yuma County/ San Luis Walk-In Clinic, Inc**
Total COVID-19 Tests: 355,857
- **La Paz County Total COVID-19 Tests**
SLWIC-Parker Walk-In Clinic (New Clinic 5/20/2020);
42,144 COVID-19 tests
- **Mohave County Total COVID-19 Tests**
(10/2021 SLWIC New Clinic) Lake Havasu Pediatric and
Family Center Total Tests: **983**
- **Total Vaccines given YTD : 94,628 out of this, 12,376
children received their Covid vaccines**





*REGIONAL CENTER FOR BORDER HEALTH, INC.
SAN LUIS WALK-IN CLINIC, INC.*

THANK YOU!

*GUSTAVO J. ALVAREZ, MPH
DIRECTOR OF PUBLIC HEALTH & PATIENT ENGAGEMENT
(928) 662-0406
GALVAREZ@RCFBH.ORG*

VISIT US AT WWW.RCFBH.ORG