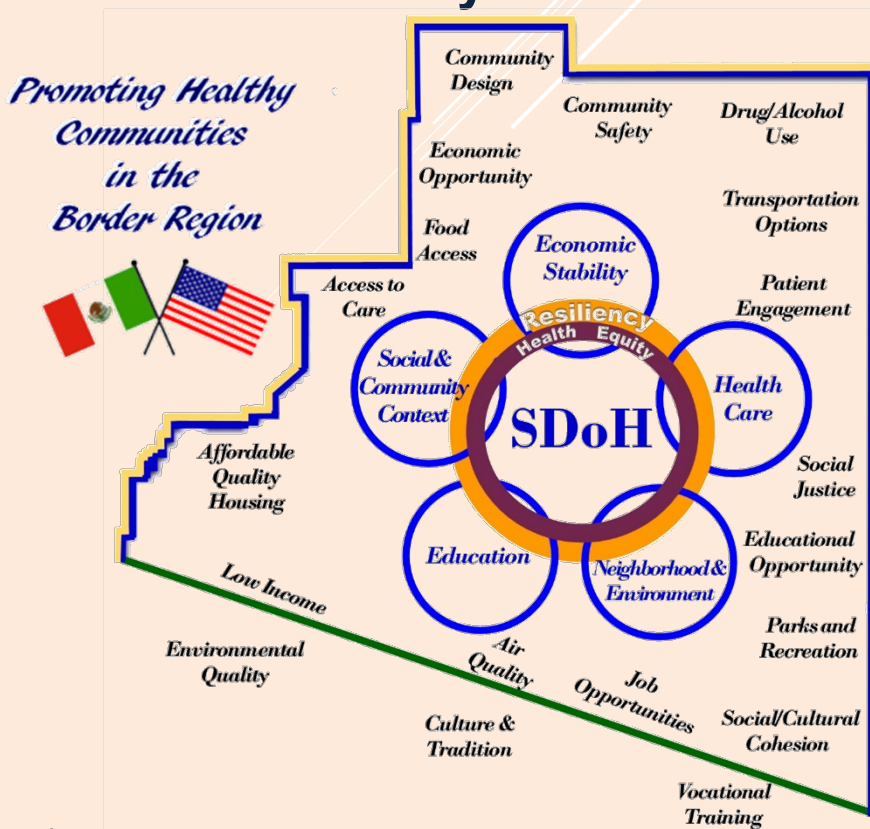


**Arizona Biomedical Research Centre
and NAU's Center for Health Equity Research
present**

2nd Annual Yuma Forum: "Improving Health Equity Through Collective Community Action"



Wednesday June 13th, 2018
Pivot Point Conference Center
Yuma, Arizona



Arizona Biomedical Research Centre and NAU's Center for Health Equity Research

present

2nd Annual Yuma Forum: “Improving Health Equity Through Collective Community Action”

Wednesday, June 13, 2018

**Pivot Point Conference Center
310 N. Madison
Yuma, Arizona**

- Objectives:**
- 1. Reduce Health Inequities through Collective Community Engagement**
 - 2. Develop Health Research Capacity in the Yuma/Sonora Border Region**

PROGRAM AGENDA

8:00am **Registration**

8:30am **General Session**

Southern Pacific Room

MC: Michael J. Sabath, PhD, Associate VP & Campus Executive Officer, NAU Yuma
Welcome - Amanda Aguirre, President & CEO, Former State Senator

“Models of Translating Research into Action”

Robert T. Trotter, II PhD

Regents' Professor, Department of Anthropology, Northern Arizona University

Julie Ann Baldwin, PhD, Director, Center for Health Equity Research, Professor, Department of Health Sciences, Northern Arizona University

9:00am **Keynote Address: “Health Policy: Creating Sustainable Change”**

Southern Pacific Room

Daniel Derksen MD, Professor & Chair

Community, Environment & Policy Department, Walter H. Pearce Endowed Chair & Director, Arizona Center for Rural Health, Mel and Enid Zuckerman College of Public Health, The University of Arizona Health Sciences

9:30am

Panel Discussion: “Health Equity: Challenges & Opportunities”

Southern Pacific Room

Facilitator: Jason R. Bradley, PhD(c), MEd, RN, CCRN-k, LPC

1. Dr. B. Michael Nayeri, FABMP, DAIPM, Director, Healthy Aging Program (A-HA) Arizona Department of Health Services (Topic: The Golden Years)
2. Dr. Jorge Gomez, M.D., Ph.D., Assistant Professor of Public Health, Mel and Enid Zuckerman College of Public Health; Associate Director for Elimination of Border Health Disparities; Associate Director for Cancer Outreach, UA Cancer Center; Assistant Vice-President for Translational Research in Special Populations Office of the Senior Vice President for Health Sciences (Topic: Health Equity, Inequity, and Disparities in Hispanics in the United States)
3. Marcus Johnson, Director, State Policy and Advocacy Vitalyst Health Foundation (Topic: Social Determinants/Public Policy)
4. Collaborating Research Centers (CRCs) a Robert Wood Johnson Foundation Program
Michael Shafer, PhD, Center Director for Applied Behavioral Health Policy School of Social Work, Arizona State University (Topic: Financing and Service Delivery Integration for Mental Illness and Substance Abuse)

10:50am **Q & A Session**

11:00am **Break (move into breakout sessions)**

11:15am **Improving the Delivery Systems to Reduce Health Inequities**
Breakout Sessions (Group Facilitation)

Topic	Facilitator/Recorder	Room
Binational Border Health	Michael J. Sabath, PhD, Associate VP & Campus Executive Officer, NAU Yuma Emma Torres, MSW, Executive Director, Campesinos Sin Fronteras	<i>Southern Pacific Blue Group</i>
Community Engagement	Maria Chavoya, Regional Manager Community Affairs, Cenpatico Gloria Coronado, Health Promotions Program Manager, Yuma County Public Health Services District	<i>Colorado River Green Group</i>
Clinical/Research Based Agenda	Jason Bradley, PhD(c), MEd, RN, CCRN-k, LPC. Assistant Clinical Professor, NAU Robert T. Trotter, II, PhD, Regents’ Professor, NAU	<i>Anza/Redondo Yellow Group</i>
Workforce Development	John R. Bowles, PhD, MSN, BSN, RN, Administrative Director of Nursing Operations, Yuma Regional Medical Center Julie A. Baldwin, PhD, Professor, Department of Health Sciences, Director, Health Equity Research, NAU	<i>Castle Dome Red Group</i>

12:15pm **Break**





12:30pm Lunch

1:30pm Continue Breakout Sessions

Topic	Facilitator/Recorder	Room
Binational Border Health	Michael J. Sabath, PhD, Associate VP & Campus Executive Officer, NAU Yuma Emma Torres, MSW, Executive Director, Campesinos Sin Fronteras	<i>Southern Pacific Blue Group</i>
Community Engagement	Maria Chavoya, Regional Manager Community Affairs, Cenpatico Gloria Coronado, Health Promotions Program Manager, Yuma County Public Health Services District	<i>Colorado River Green Group</i>
Clinical/Research Based Agenda	Jason Bradley, PhD(c), MEd, RN, CCRN-k, LPC. Assistant Clinical Professor, NAU Robert T. Trotter, II, PhD, Regents' Professor, NAU	<i>Anza/Redondo Yellow Group</i>
Workforce Development	John R. Bowles, PhD, MSN, BSN, RN, Administrative Director of Nursing Operations, Yuma Regional Medical Center Julie A. Baldwin, PhD, Professor, Department of Health Sciences, Director, Health Equity Research, NAU	<i>Castle Dome Red Group</i>

2:00pm Move to General Session

2:15pm **General Session:** *Southern Pacific Room*
"Improving the Delivery Systems to Reduce Health Inequities Group Reports"
Facilitator: Diana Gomez, Director, Yuma County Health Services District

-  Binational Border Health
-  Community Engagement
-  Clinical/Research Based Agenda
-  Workforce Development

2:45pm **The 8 Dimensions of Wellness** – Bring It Together with Social Determinants of Health
Leon W. Lead, Manager of Program Initiatives, Cenpatico Integrated Care/Health Net

3:30pm Adjourn

Next Steps

September 12th, 2018

Review of Recommendations by the Policy Committee

October 19th, 2018

Community Report and Strategic Planning Meeting

Speakers

Babak Michael Nayeri, dedicated his professional career to population health and health systems improvement, public health, and teaching the future workforce. Dr. Nayeri has over 16 years of health systems leadership experience including military health systems, public health, and postgraduate teaching. He has led interprofessional teams to peak performance through strategic thinking, innovation, and proven business models. In his current duties as Director of Healthy Aging at the Arizona Department of Health Services, Dr. Nayeri serves as:

Chairperson, Arizona Attorney General's Health & Safety Committee (HSC)

Chairperson, Arizona Falls Prevention Coalition

Board member, Office of the Attorney General's Taskforce Against Senior Abuse (TASA) Advisor-Liaison, Governor's Advisory Council on Aging

Member & Leadership, Arizona Alzheimer's Task Force

Dr. Nayeri holds joint appointments:

Clinical associate professor at the University of Arizona, College of Medicine, General Internal Medicine, Division of Geriatrics

Research Associate, Center on Aging

Scientific Member, Healthy Brain Research Network

Adjunct Professor, University of Arizona, Mel & Enid Zukerman College of Public Health

Adjunct Professor, Arizona State University, College of Health Solutions & the College of Nursing and Health Innovation

As Director of State Health Policy and Advocacy, Marcus oversees Vitalyst's public policy agenda, and is responsible for initiatives related to access to care and coverage, workforce development and health advocacy. Marcus comes to the world of philanthropy by way of public health and health care, having worked for the Maricopa County Department of Public Health and the Arizona Hospital and Healthcare Association. He has contributed to numerous policy and systems changes in health care, behavioral health and public health, and is committed to bridging preventive health strategies with an evolving health care system to ensure that all communities have what they need to be healthy. Marcus earned his Master's degree in Public Health and a B.S. in Physiology from The University of Arizona. In his free time, Marcus enjoys outdoor activities, weekend getaways with his wife and dogs, and remaining a stubbornly optimistic fan of the Dallas Cowboys.

Leon Lead has over 15 years' experience in both the public and private sectors in the fields of behavioral health, justice systems, public education and child welfare. Leon currently serves as the Manager of Program Initiatives at Cenpatco Integrated Care. In this role Leon oversees housing, employment and evidenced based practices for the Health Plan. Leon's passion learning and teaching is prevalent in his work addressing conditions of Social Determinates of Health. Leon's experience in navigating systems has been both a professional and personal journey in which he is inspired to shared lessons learned. Leon finds inspiration in the resiliency of humans and the stories they share!

Dr. Jorge Gomez is the University of Arizona Health Sciences Assistant Vice President for Translational Research in Special Populations, Associate Director of the Center for Elimination of Border Health Disparities, and the Assistant Director for Cancer Outreach at the UA Cancer Center. He is an Assistant Professor in the Community, Environment and Policy Department at the Mel and Enid Zuckerman College of Public Health, Public Health Policy and Management Program. Prior to joining UAHS in January of 2016, Dr. Gomez worked for three years as Medical Officer, Program Director for the National Cancer Institute's (NCI) prestigious Specialized Programs of Research Excellence (SPORE) and was then promoted to Branch Chief, Medical Officer, of the Organ Systems Branch. During his ten years there, the program grew with more than 50 awards to coordinated networks of researchers. He developed a new NCI program – the Office of Latin American Cancer Program Development (OLACPD), that resulted in the formation of the US-Latin American Cancer Research Network (US-LACRN) with the US NCI, and five Latin American countries (Argentina, Brazil, Chile, Mexico and Uruguay).

Michael S. Shafer, Ph.D. is a professor at Arizona State University's College of Public Service and Community Solutions where he also holds appointments in the School of Social Work and the School of Criminology and Criminal Justice. Dr. Shafer is the founding director of the Center for Applied Behavioral Health Policy. Dr. Shafer has authored more than 40 peer-reviewed research articles and generated more than \$45 million in grants and contracts that target capacity building and innovation in behavioral health services. Dr. Shafer earned his Ph.D. in Education in 1988 from Virginia Commonwealth University. He has received numerous awards and citations, including the 2013 ASU Founders Day and recognition from the U.S. Department of Justice. Dr. Shafer is a frequent contributor to professional literature and he consults with behavioral health agencies throughout the country.

Daniel Derksen, M.D. is the Walter H. Pearce Endowed Chair and Director of the Arizona Center for Rural Health (AzCRH), and Professor & Chair of the Community, Environment & Policy Department at The University of Arizona Health Sciences (UAHS) Mel and Enid Zuckerman College of Public Health. He is board certified in Family Medicine, licensed in Arizona, and has a joint academic appointment as Professor in the Department of Family and Community Medicine, UAHS College of Medicine (COM). The AzCRH mission is to improve the health and wellness of Arizona's rural and vulnerable populations. Dr. Derksen is Principal Investigator (PI) of the Center's State Office of Rural Health (AzSORH), Rural Hospital Flexibility Program (AzFlex), Small Rural Hospital Improvement Program (AzSHIP), and the AzCRH Navigator Consortium. Dr. Derksen grew up in Phoenix, completed medical school at the UA COM in Tucson, did his family medicine residency at the University of New Mexico (UNM), then spent 25 years as a faculty member in UNM's Department of Family & Community Medicine. His leadership roles included negotiating all clinical contracts for the UNM Health Sciences Center for five years, directing the faculty practice plan for two years, directing the academic practice relief programs for ten years, and other roles. Dr. Derksen has been PI of state, federal, private foundation, contract, and grant awards in excess of \$55 million over the 30 years of his academic career.

Planning Committee

Amanda Aguirre, Former Arizona State Senator Amanda Aguirre presently serves in the capacity of President & CEO of the Regional Center for Border Health, Inc. since 1991 and its subsidiary San Luis Walk-In Clinic, Inc., a primary care rural health medical center. Ms. Aguirre has been involved for more than 35 years in health care and business administration.

In 2007 she established a licensed post –secondary vocational training center in the area, the RCBH’s “College of Health Careers”, which has generated job opportunities for over 1,448 individuals. In 2016 Ms. Aguirre joined the Morrison Institute Distinguished Fellow from ASU.

She presently serves in the following committees:

- Arizona Telemedicine Council, U of A
- Arizona State Medicaid Advisory Committee (SMAC) AHCCCS
- Co-Chair for the Medical Tourism Subcommittee under the Governor’s Arizona Sonora Commission Health Services Committee
- NAU Advisory Board under President Rita Cheng
- NAU Advisory Committee for the Southwest Health Equity Research Collaborative (SHERC)
- U of A Advanced Nursing Education Workforce (ANEW) Advisory Committee

In 2003 Ms. Aguirre became the first female and first Hispanic to represent District 24 (new legislative district 4) in the Arizona House of Representatives and in the Arizona State Senate (in 2006) where she served in the Arizona State Senate through 2010.

Julie Baldwin, PhD, earned her doctorate in Behavioral Sciences and Health Education in 1991 from the Johns Hopkins University School of Hygiene and Public Health. From 1994-2004, she served as a tenured faculty member at Northern Arizona University (NAU). She joined the faculty at the University of South Florida College of Public Health in the Department of Community and Family Health in 2005. She returned to NAU in August 2015 to direct the Center for Health Equity Research. Dr. Baldwin’s research over the years has focused on both infectious and chronic disease prevention. Themes which have characterized her work include: utilizing community-based participatory research approaches, working with underserved populations, and developing and implementing culturally competent public health interventions. As an enrolled member of the Cherokee Nation of Oklahoma, she has made a life-long commitment to serving diverse communities and to advocating for health promotion programs for children, adolescents and families.

Alex Bejarano began work with Regional Center for Border Health, Inc. in 2016 as the Community Liaison, and soon thereafter was promoted to Community Liaison & Director of Public Relations. Alex has a background in public service having been elected to the Wellton Town Council at age 19 and serving two terms. Alex’s passion for public service goes hand in hand with the work that is done at RCBH – he is a strong advocate for and believer in the mission of RCBH. Alex’s role with RCBH includes outreach, special initiatives, and marketing. Alex previously worked with RCBH from 2011-2014 in the same capacity and after a brief time away is happy to be back with the company he loves. Working in rural disadvantaged communities is a priority for Alex as he grew up in a small rural town and recognizes the struggles rural communities often face therefore enjoys giving back to his community any way he can.

Jason Bradley is a PhD candidate in the College of Nursing and Healthcare Innovation at Arizona State University (ASU) where he is a 2016-18 Jonas Nurse Leader PhD Scholar with the Hartford Center for Gerontological Nursing Excellence at ASU. Jason currently serves as an Assistant Clinical Professor and Program Coordinator for Northern Arizona University on the Yuma Branch campus, teaching in the traditional baccalaureate nursing program. Jason maintains national certification as a critical care nurse and continues to work as a bedside nurse with the Yuma Regional Medical Center intensive care unit and inpatient palliative care team. He is a member of the American Nurses Association, Arizona Nurses Association, American Association of Critical Care Nurses and Sigma Theta Tau International Nursing Honor Society. Jason is a proud Lumberjack with a passion for nursing, teaching and supporting the people and communities in Yuma County.

John Bowles, PhD, RN is a Professor of Practice for Arizona State University College of Nursing and Health Innovations and Administrative Director of Nursing Operations and Yuma Regional Medical Center. He has taught Advancing Research-Based Health Policy through Leadership and Innovation Science. John has over 19 years of nursing experience and operations leadership with an emerging focus on Lean Management Systems to develop innovative healthcare delivery models. His research began with vulnerable populations with a focus on U.S.-Mexico border health issues and has gradually shifted to nursing leadership with purposeful use of influence, innovation and advocacy. John has presented research and evidenced based practice at local, state, regional and national professional conferences. He is currently working with leaders of the American Academy of Nursing- Expert Panel on Building Health Care System Excellence, investigating nursing's leadership role in support of the Quadruple Aim.

Gloria Coronado, has worked in the public health field for over 12 years. She is currently the program manager for the Yuma County Public Health Services District, Health Promotion Division. In her position, Gloria provides leadership and oversight for the implementation and management of different prevention programs. Mrs. Coronado is a member of the Arizona Prevention Research Center Community Action Board and currently serves at the co-chair of the Research Committee. From 2012 to 2016 Gloria served on the First Things First Yuma Regional Council board member advocating and supporting for the development, education and health needs of young children in the Yuma region.

Maria Chavoya, Regional Manager for Community Affairs, Cenpatico Integrated Care/Health Net soon to be Arizona Complete Health is a community advocate with over 35 years' experience in communications and public relations. Her work with the poor and underserved populations in border communities has brought her much acclaim in the work she has done for various organizations, both as an employee and a volunteer. She is passionate about the rights of the underserved and her advocacy infuses the work she does in all areas. She currently is a governing board member for Arizona Western College, Vice-Chair/Treasurer for the Arizona Association of Community College Trustees, Chairperson for YPIC, Yuma Private Industry Council, WIOA Board. She is also a member of the Arizona Western College Community Health Worker Advisory Board Committee, the Arizona Community Health Worker Workforce Coalition, Community/Public Health Worker Education Collaborative and the AzPRC Community Action Board (CAB) member. She has 4 children and 13 grandchildren. And enjoys traveling with her family when possible.

Edgardo A. Figueroa started working with RCBH in 2015 in the Behavioral Health Department where he assisted in the Department with the implementation of counseling programs such as Driving Under the Influence and Domestic Violence programs. In January 2018 Edgardo transitioned as the Director of Western Area Health Education Center. Edgardo holds a bachelor's in psychology. Edgardo is passionate working with disadvantage population, promoting education and the wellbeing of the community. In May 2018, Edgardo was elected as the Co-President for the Binational Council of Health and Environmental Council, San Luis R. C. Sonora/Yuma, County, AZ

Diana Gomez is the director of public health for the Yuma County Public Health Services District. Diana has worked in public health for over 20 years and has served on various local, state, and national committees and workgroups to build and sustain collaborative partnerships that promote safe, healthy, and resilient communities. Diana is the current president of the Arizona Local Health Officers Association and is a member of the Arizona Department of Homeland Security Regional Advisory Council (Southern Region). Diana is a Flinn-Brown Fellow and was recently recognized by the Kresge Foundation as an Emerging Leader in Public Health. Diana graduated from the University of Arizona and obtained a Master in Public Health degree from Grand Canyon University. She has an interest in community-health research and policy development and actively mentors students interested in health care career.

Tanya Hodges, Regional Academic Programs Coordinator, University of Arizona-Yuma/La Paz/Imperial

Rudy Ortiz has over 20 years of experience in education and early childhood leadership. Rudy has his Masters in the Art of Teaching/Early Childhood Education and holds a Credential in Certified Public Management from Arizona State University. Once a preschool teacher, he was the first preschool teacher to receive the honor of Teacher of the Year for the entire San Diego Unified School District. He's currently the First Things First Yuma Regional Director and Adjunct Faculty at Arizona Western College. Rudy serves on numerous committees including the Yuma Education Advocacy Council. He is passionately committed to supporting, enhancing and ensuring the early childhood system is a top priority in Yuma County.

Michael J. Sabath is an Associate Vice President and Campus Executive Officer for the Yuma Branch Campus of Northern Arizona University. He earned a B.S. in Business Administration from the Haas School of Business at the University of California-Berkeley, an MPA from California State University, and a PhD from the Graduate School of Public and International Affairs at the University of Pittsburgh, Pennsylvania. Dr. Sabath was with San Diego State University for 23 years serving as a professor, division chair, and Associate Dean. Prior to this, he taught in the School of Business and Public Administration at the University of Missouri-Columbia and at Indiana University-Bloomington. His research has focused on public policy and management issues related to the justice system and transnational cooperation.

Emma Torres, MSW, is the founder and the Chief Executive Officer of Campesinos Sin Fronteras, a community based 501 c3 grassroots organization serving farmworker families in the border communities of Yuma County, Arizona. A former migrant farmworker herself, Ms. Torres now has thirty-three years of public health experience as a migrant health advocate, she holds a Master's Degree in Social Work and is a UCLA Johnson and Johnson Health Executive Program Graduate. Ms. Torres is one of the pioneers of the Arizona Community Health Worker/Promotora program starting the first CHW program in Arizona in 1987. She has been a strong proponent and advocate of the CHW model as one of the most effective strategies in reaching and serving low-income Hispanic and migrant farmworker population. In 2003 and to the present, Mrs. Torres holds a presidential appointment to the US/Mexico Border Health Commission representing the State of Arizona.

Robert T. Trotter, II Ph.D.

Dr. Trotter is an Arizona Regents' Professor in the department of Anthropology, and a senior scientist in the NAU Center for Health Equity Research (CHER). His research interests include cross-cultural health care issues, organizational models for change, social network impacts on health and social structures, innovation, exploring advanced ethnographic methods, and translational science. He has conducted research for the World Health Organization, the Centers for Disease Control and Prevention, the National Institutes of Health, and the Surgeon General's Office of HIV/AIDS Policy. His work in medical anthropology addresses cross-cultural issues in health care delivery and prevention, focused on cancer, cardiac care, HIV prevention and intervention, disabilities, and addiction studies. He also designs and conducts evaluation programs for complex partnerships (industry-university, government-university-community, community-scientist), creating cultural models of collaborative systems, ethnographic explorations of institutional dynamics, and organizational network analysis. His publications include books and articles on Mexican American traditional healing, cross-cultural alcohol and drug studies, migrant farm worker health and education, HIV/AIDS, alcohol and drug prevention studies, partnership design, diagnosis and intervention, and anthropological ethics.