

# What's New & Cool in Rural Health Equity

## Yuma County: Resilient Communities & Sustainable Health Equity

May 19, 2022

Dan Derksen, M.D.

Associate Vice President for Health Equity, Outreach & Interprofessional Activities

The University of Arizona

[dderksen@arizona.edu](mailto:dderksen@arizona.edu)





# AZ Rural Health Disparities

Higher Poverty in Rural AZ Communities

Higher % Rural Pop Is > Age 65

Worse Rural Health Outcomes Acute & Chronic  
Disease (Diabetes, Heart Disease, Stroke, COVID-19)

AZ meets just 41% primary care need, ranks 44 of 50  
states in PCP per 100,000 pop.

# AZ Demographics

#1 Phoenix Fastest Growing Major U.S. City X 5 years

AZ Fast Growing > age 65 pop: 50% increase in 10 yrs

Top 10 Fastest Growing State Pop

1.5 Million age > 60 Arizonans (9% are <FPL of \$12,880)

#24 Rank of States: Serving the Elderly Population

1. <https://www.nytimes.com/2021/08/12/us/phoenix-census-fastest-growing-city.html>
2. <https://www.azeconomy.org/2020/07/economy/arizona-is-getting-older-and-so-is-the-u-s/>
3. <https://www.azeconomy.org/2021/04/demographics-census/census-2020-arizona-among-top-growing-states-but-does-not-match-growth-of-previous-decades/>
4. [https://acl.gov/sites/default/files/Aging%20and%20Disability%20in%20America/2020ProfileOlderAmericans.Final\\_.pdf](https://acl.gov/sites/default/files/Aging%20and%20Disability%20in%20America/2020ProfileOlderAmericans.Final_.pdf)
5. <https://www.usnews.com/news/best-states/rankings/aging>

# Three New & Cool AZ Models - Rural Health Equity

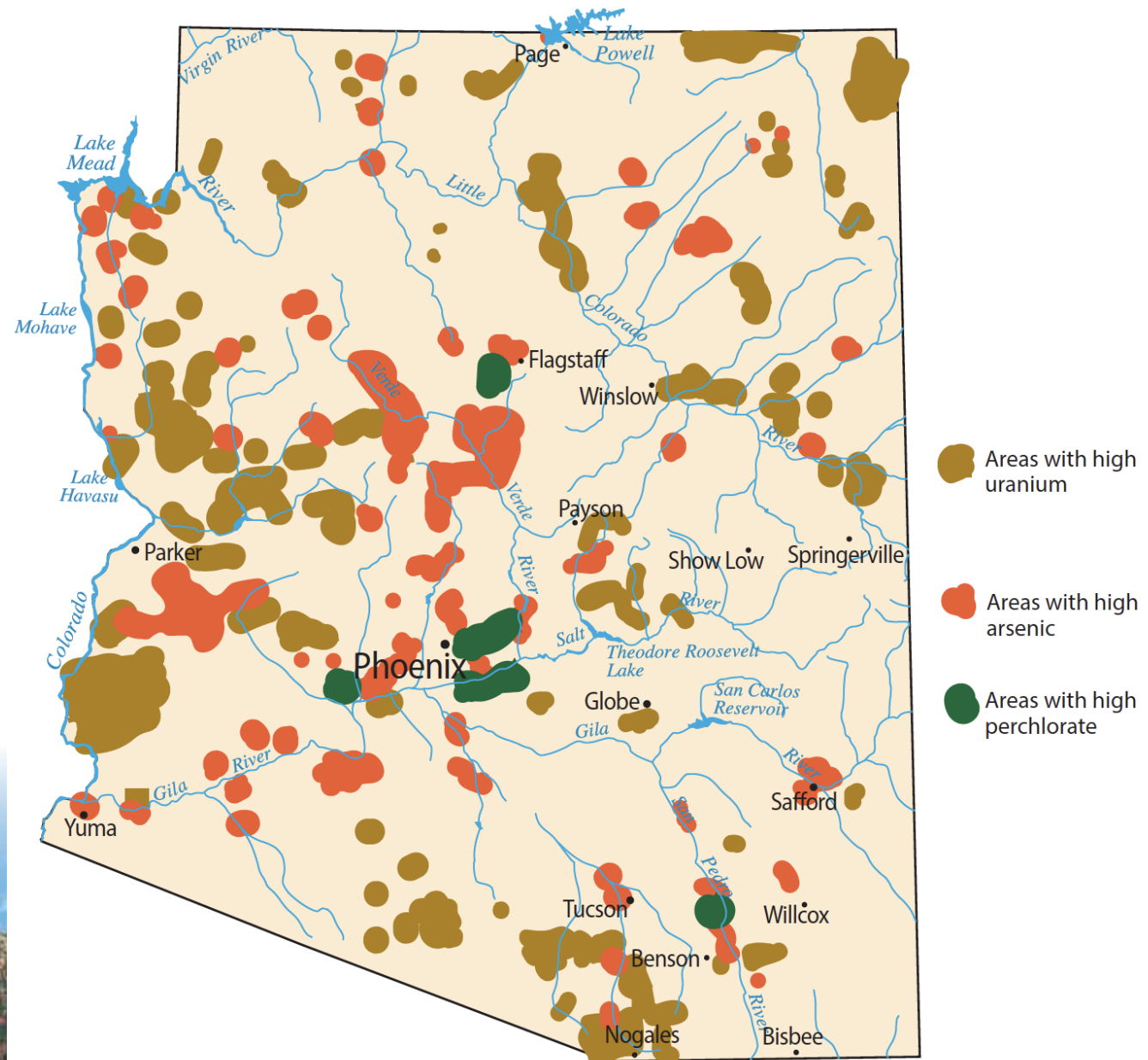
- I. One Health
- II. Expansion Home & Community Based Services, Direct Care Workforce
- III. Rural Vaccination Coverage



**One Health** simultaneously addresses pressing problems in human, animal, and environmental health.



Frank von Hippel, PhD presents on One Health to state legislators at the University of Arizona's DC Center for Outreach & Collaboration



# **\$1.5B for Arizona: ARPA Sec. 9817**

Enhances AZ Home & Community Based Services (HCBS)  
Serves AZ Long Term Care System (ALTCS) Enrollees  
Expands Well-Trained, Distributed Direct Care Workforce  
Advances Technology for Greater Independence  
Empowers Individuals, Families for Healthy Aging in Place

ARPA Sec. 9817 State Guidance: <https://www.medicaid.gov/federal-policy-guidance/downloads/smd21003.pdf>



# Approvals Completed: CMS, State, Governor

AHCCCS submitted HCBS Spending Plan to CMS 7/12/21

CMS '*partially approved*' AHCCCS HCBS plan 9/28/21

CMS fully approved it 1/19/2022

AHCCCS submits quarterly spending, narrative updates

**AHCCCS Received Expedited State Expenditure Authority  
From the State Legislature (Required 2/3 Majority Vote)  
Signed by the Governor Ducey 3/1/2022**





Prioritizes:

Arizona's seniors

Individuals with disabilities

Individuals with serious mental illness

Children with behavioral health needs

[https://www.azahcccs.gov/AHCCCS/Downloads/Initiatives/ARPA/AHCCCS\\_ARPA\\_HCBS\\_SpendingPlan.pdf](https://www.azahcccs.gov/AHCCCS/Downloads/Initiatives/ARPA/AHCCCS_ARPA_HCBS_SpendingPlan.pdf)

HCBS Funding Priorities for  
Arizona's Seniors, Individuals with Disabilities, Individuals Living with Serious Mental Illness,  
and Children with Behavioral Health Needs



The University of Arizona  
Health Sciences

Strengthening and Enhancing Arizona's Home and Community Based System of Care	Advancing Technology to Support Greater Independence and Community Connection
(1) Empowering parents and families to provide care and meet the needs of their children	(1) Utilizing new technology to promote care coordination and seamless communication
(2) Funding local initiatives and community-specific programming to improve member health	(2) Creating tools that strengthen quality monitoring and prevent abuse and neglect
(3) Assessing member engagement and satisfaction to better understand needs, prevent abuse and neglect, and identify opportunities for improvement	(3) Supporting individual self-sufficiency by connecting members to technological tools and resources that promote independence
(4) Expanding access to care from a well-trained, highly-skilled workforce	
(5) Promoting stabilization, access to supportive services, and workforce retention/consistency to improve member outcomes	

[https://www.azahcccs.gov/AHCCCS/Downloads/Initiatives/ARPA/AHCCCS\\_ARPA\\_HCBS\\_SpendingPlan.pdf](https://www.azahcccs.gov/AHCCCS/Downloads/Initiatives/ARPA/AHCCCS_ARPA_HCBS_SpendingPlan.pdf)



## Disparities in COVID-19 Vaccination Coverage Between Urban and Rural Counties — United States, December 14, 2020–January 31, 2022

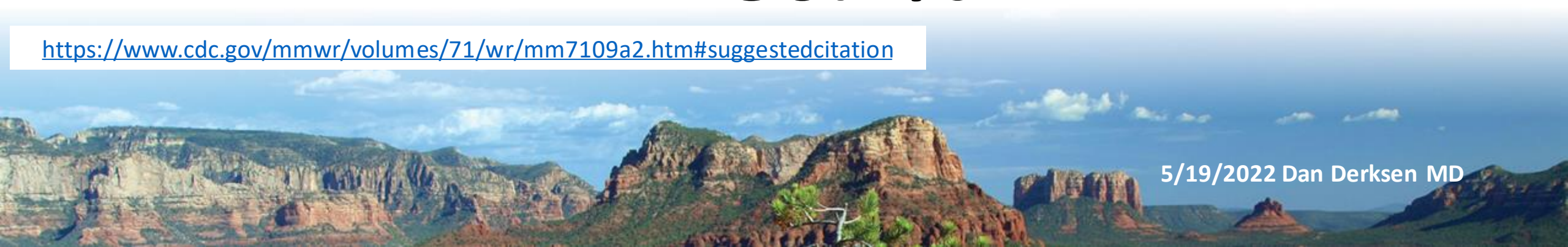
Weekly / March 4, 2022 / 71(9);335–340

# Vaccination Coverage

	U.S.	Arizona
Urban	75.4%	69.3%
Rural	58.5%	<b>86.1%</b>

Urban > rural  
vaccination coverage in  
every state....  
**except Arizona!**

<https://www.cdc.gov/mmwr/volumes/71/wr/mm7109a2.htm#suggestedcitation>



Rural AZ County	Pop 2020	Vac%		Demographics	
		CDC	SVI	%AI	%Hisp
Apache	66,021	95	0.9885	73	6
Gila	53,272	78	0.8990	19	17
Graham	38,533	87	0.9640	16	30
Greenlee	9,563	61	0.6188	6	46
La Paz	16,557	66	0.9236	21	25
Navajo	106,717	95	0.9955	47	10
Santa Cruz	47,669	95	0.9318	2	83
Rural Co. Subttl	338,332	86			
AZ Pop Total	7,151,502				

SVI = Social Vulnerability Index



The University of Arizona Health Sciences

**Yuma (Small Metro) Pop 203,881 64% Hisp, CDC Vac 95% SVI 0.9895**





[dderksen@arizona.edu](mailto:dderksen@arizona.edu)

